



Cloud Systems

atmospherics® 2.3

installation | simplified™

Copyright © 2010 Cloud Systems, Inc. All rights reserved. This document, in whole or in part, may not be reproduced, translated or reduced to any machine-readable form without prior written approval from Cloud Systems, Inc. The Cloud Systems logo, “atmospherics” and “control | simplified” are all registered trademarks of Cloud Systems, Inc.

Microsoft, Windows Server 2003, and Windows are either registered trademarks or trademarks of Microsoft Corporation in the United States and/or other countries.

All other trademarks are the property of their respective owners. All rights reserved.

Cloud Systems reserves the right to make any modification to this guide or the information contained herein at any time without notice. All features, functions, and specifications are subject to change without notice or obligation.

Company Address

Cloud Systems, Inc.
7220 Edgewater Drive
Oakland, CA 94621

Telephone

Main: 415.896.6489
Toll-Free: 800.806.5567

Support

support.cloudsystems.com

Website

www.cloudsystems.com

Introduction

Welcome to the Installation Guide for atmospherics® 2.3. This guide will take you through the installation of atmospherics step-by-step. Once you have atmospherics installed, you can reference the Administration Guide for help with configuring your control system. In addition to this guide, there are short training videos available on the Cloud Systems website that will quickly cover the most common elements of atmospherics configuration. (<http://cloudsystems.com/training-videos>)

Before you begin the atmospherics installation, you must first install PostgreSQL Database 8.1 or 8.2 for Windows. This guide will also cover this installation. Without PostgreSQL Database 8.1 or 8.2 for Windows, atmospherics will not run.

Acceptance of the End User License Agreement (EULA) for both atmospherics 2.3 and PostgreSQL is required in order to properly install and configure the environment to run atmospherics. The EULAs outline various terms under which the specific software application may be used. It is important that these are reviewed and that the terms understood prior to pressing Accept, and continuing the installation. Cloud Systems' integration with this third-party resource is compliant with the terms and conditions as set forth by the manufacturers.

Additional applications, software and drivers may be required in order for communication between the control server and the specific devices in your system design. These requirements are dependent on the unique requirements of these specific devices, and are not addressed in this document. Please refer to the manufacture provided documentation for the specific hardware used in your system to ensure the necessary resources are installed on the control server. Communication with devices requiring additional software resources on the control server should be confirmed following the instructions provided by the manufacture of the devices. atmospherics requires exclusive access to devices on the system to ensure proper functionality.

Minimum System Requirements

Server Requirements

The minimum system requires for the server on which you install atmospherics® are as follows:

MINIMUM HARDWARE REQUIREMENTS

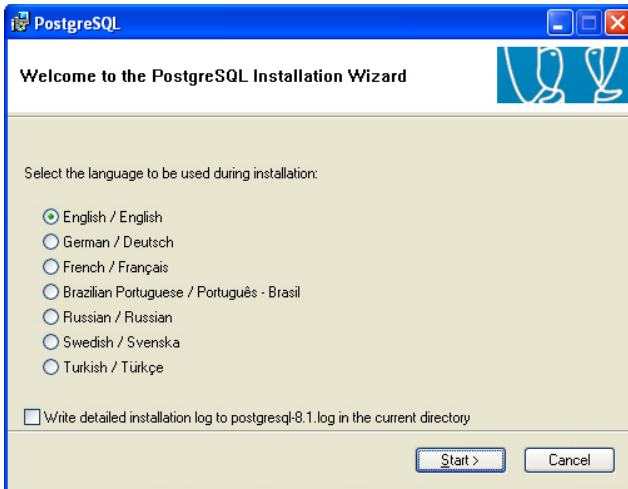
- x86 2.8Ghz or better processor
- 2 GB RAM
- 80 GB Hard Drive

OPERATING SYSTEM REQUIREMENTS

- Windows 2003 Server or better
- VMware

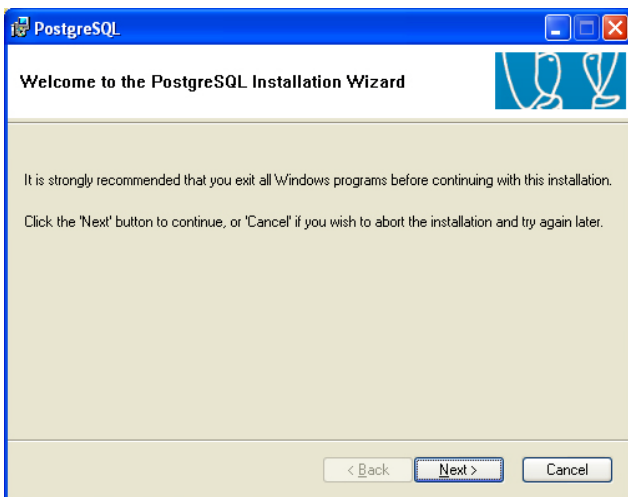
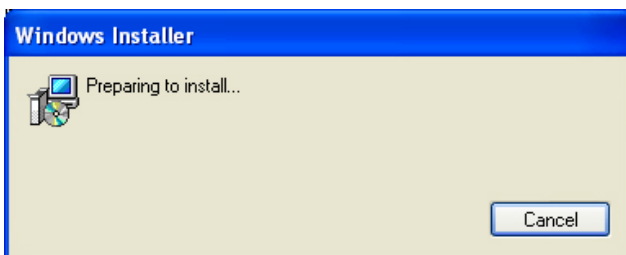
PostgreSQL 8.2

Download PostgreSQL 8.2 from <http://www.postgresql.org/ftp/binary> and run the setup .MSI installer package.

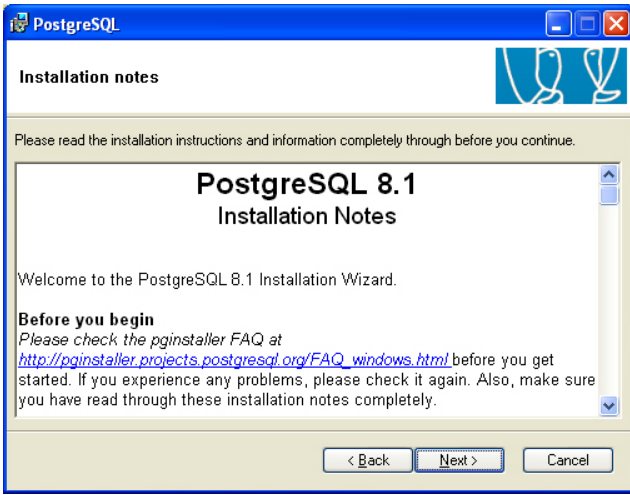


Begin by selecting the language you prefer to use for the installation.

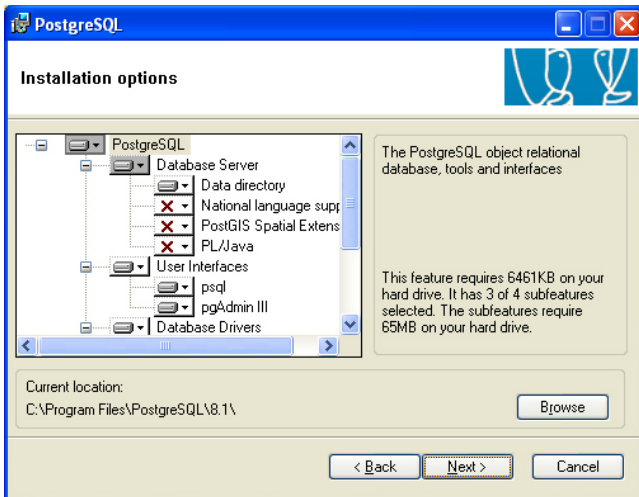
Select "Start."



Select "Next."

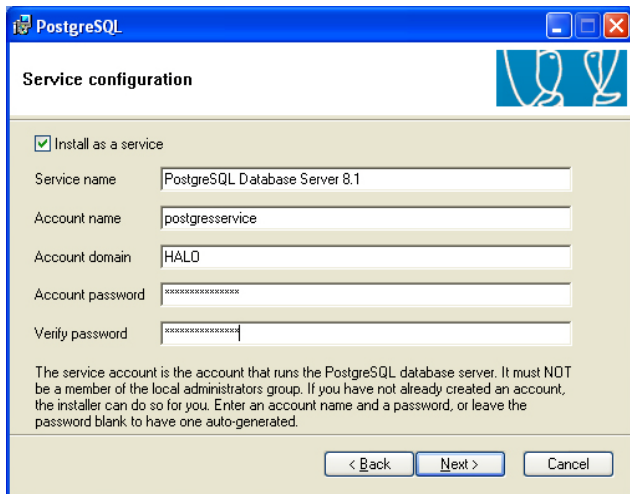


Select "Next."



You will be offered installation options. We recommend the default installation, but you can choose your own.

Select "Next."



This is the first of two steps wherein you will be required to specify a user name and password for PostgreSQL.

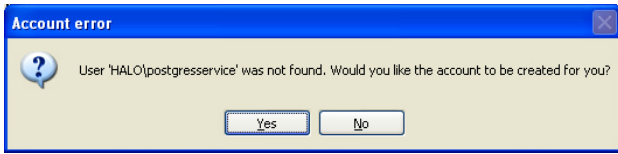
The Account name is a new user name that will be created on your computer. You can use any user name you wish. The only exception is detailed in the NOTE below.

Create a password, or, if you leave it blank, PostgreSQL will generate one for you.

Select "Next."

NOTE: The user name should never be "atmos_user" as this is used later internally during the install process.

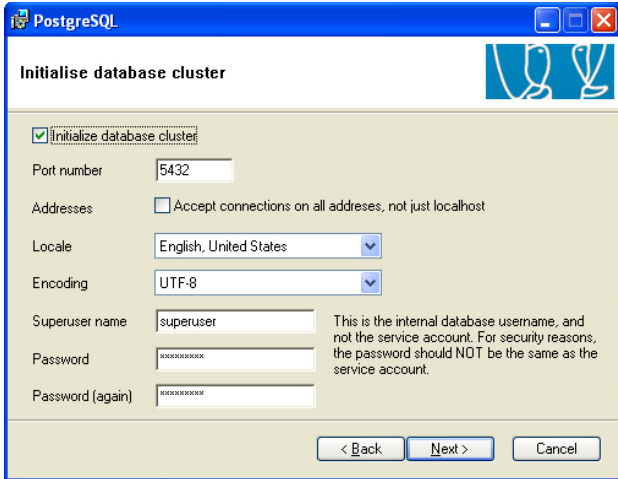
If you create your own password, be sure to select a complex (alpha-numeric, with at least one capital and at least one character) password.



Select "Yes."

The "Initialise database cluster" screen is where you will create a user name and password for the PostgreSQL database that atmospherics will access to control your enterprise.

The user name and password will be required when you install atmospherics.



Change the fields in the "Initialise database cluster" as follows:

Set Initialize DB Cluster checkbox,

Port number=5432

Choose "Locale" from the dropdown menu

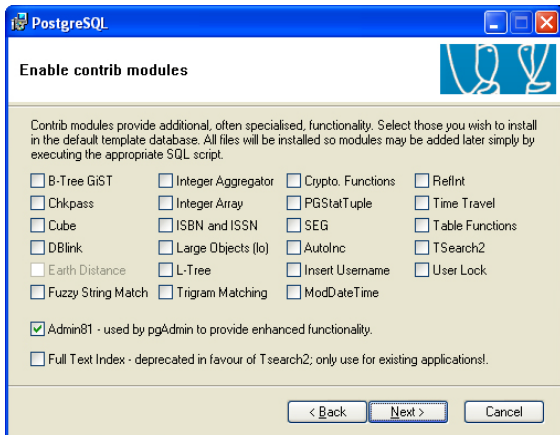
Encoding =UTF-8

Then select a Superuser name and password.

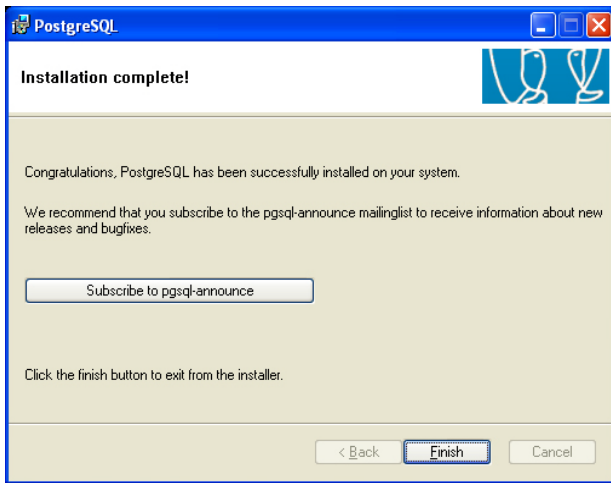
Select "Next."



Select "Next."



Select "Next."



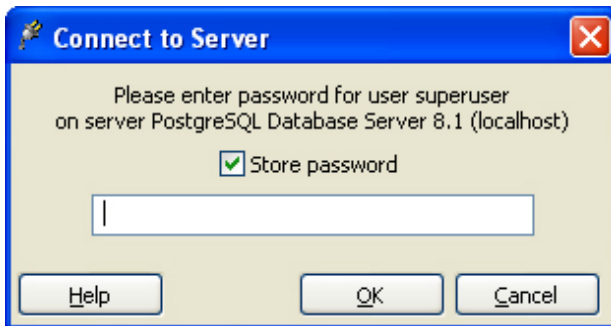
Select "Finish."

At this time PostgreSQL is installed and you are ready to install atmospherics®.

To verify the PostgreSQL installation is done properly, pull up a command prompt and run the following:

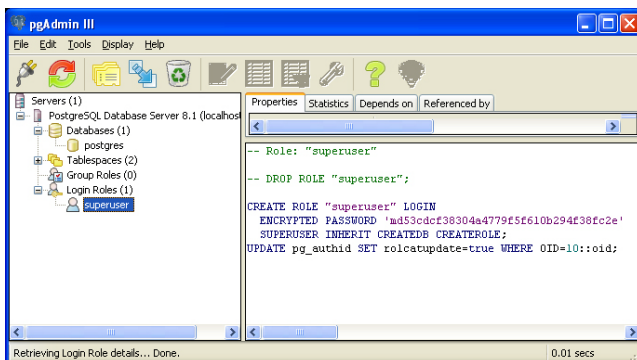
Run Start->Programs->PostgreSQL 8.2->pgAdmin III. Double-click on PostgreSQL Database Server 8.2 (localhost).

The following dialog box will appear.

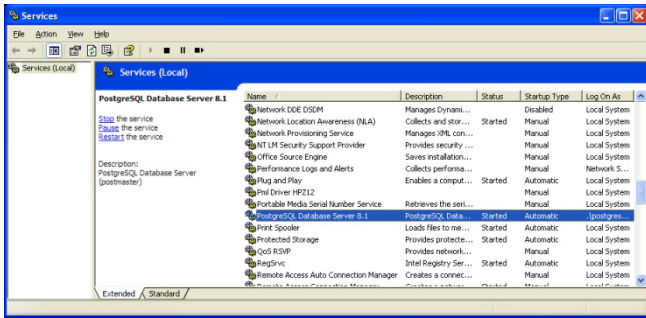


Enter the superuser password.

Select "OK".



The Superuser should be the only role.



This window confirms the Postgres service is installed and running.

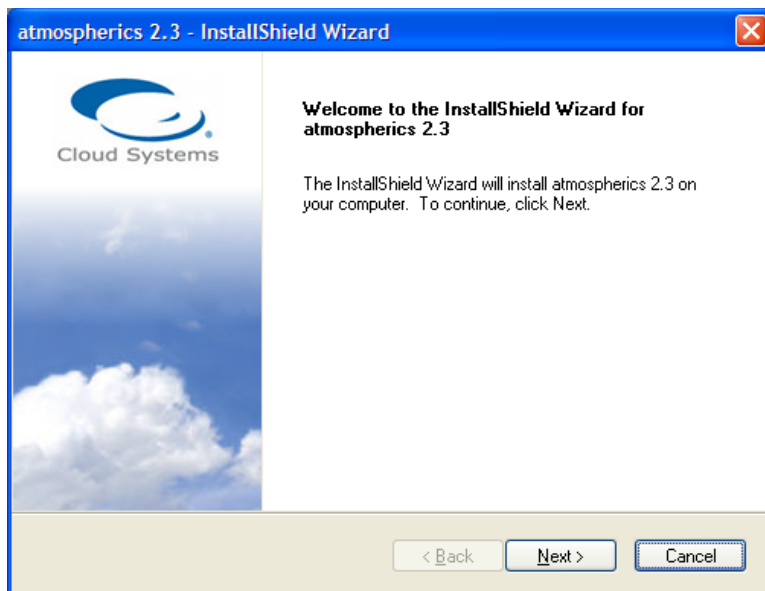
If you have any difficulties in the installation of PostgreSQL, please refer to the manufacturer's documentation. (<http://www.postgresql.org/docs/>)

atmospherics

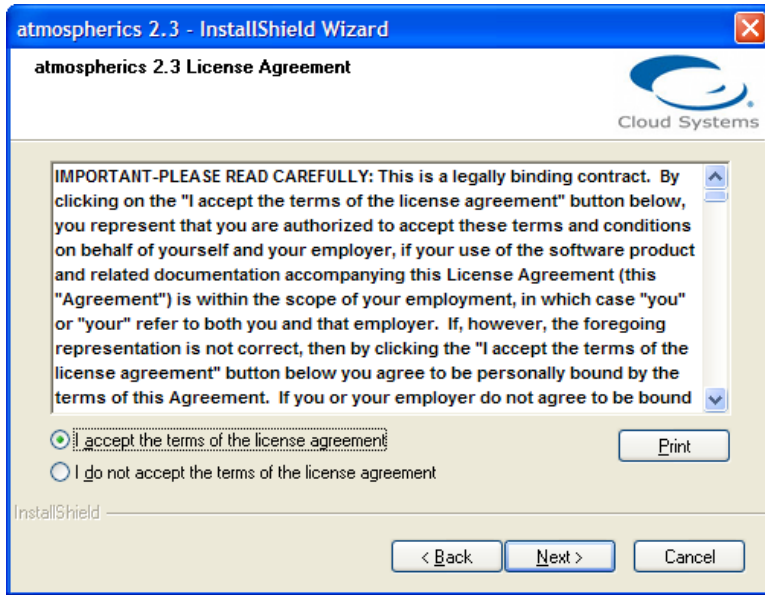
Now you are ready to install atmospherics.

Note: If you do not already have a link to download the installer please contact your sales representative or contact Cloud Systems at <http://support.cloudsystems.com>

In the atmospherics files select the atmospherics installer and run it.

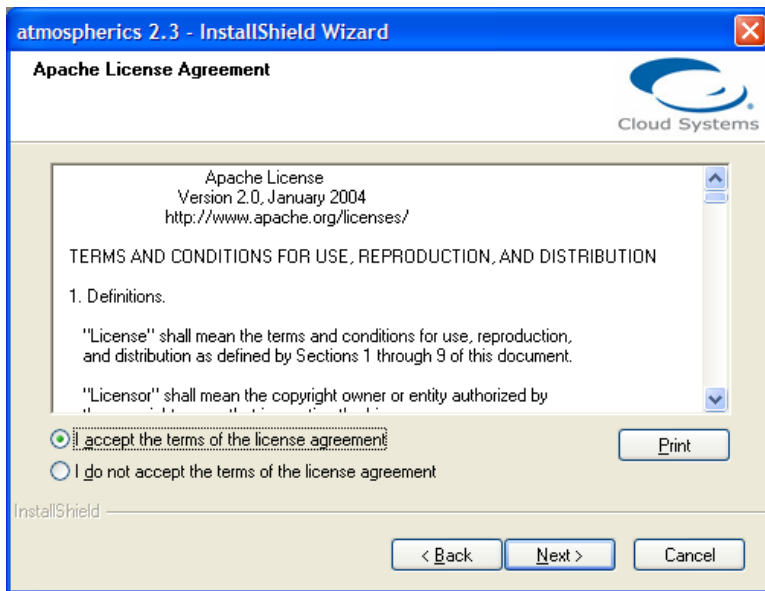


Select "Next."

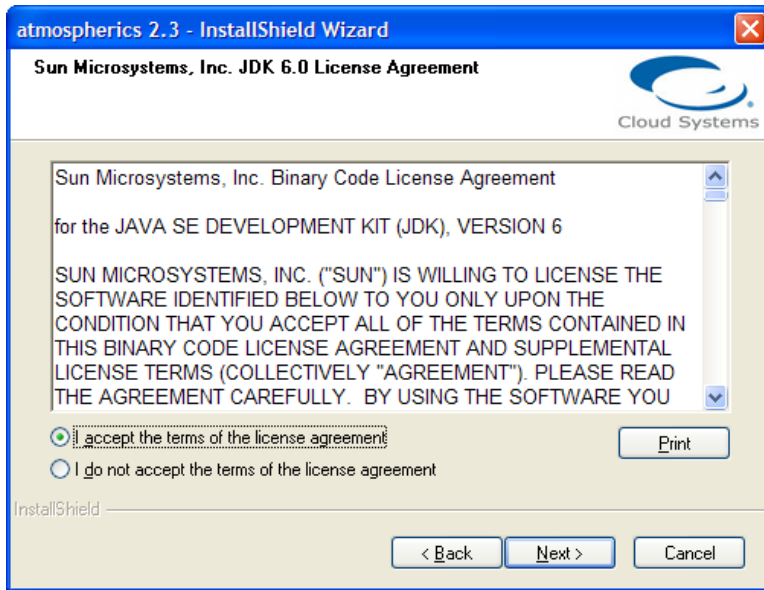


Select "Next."

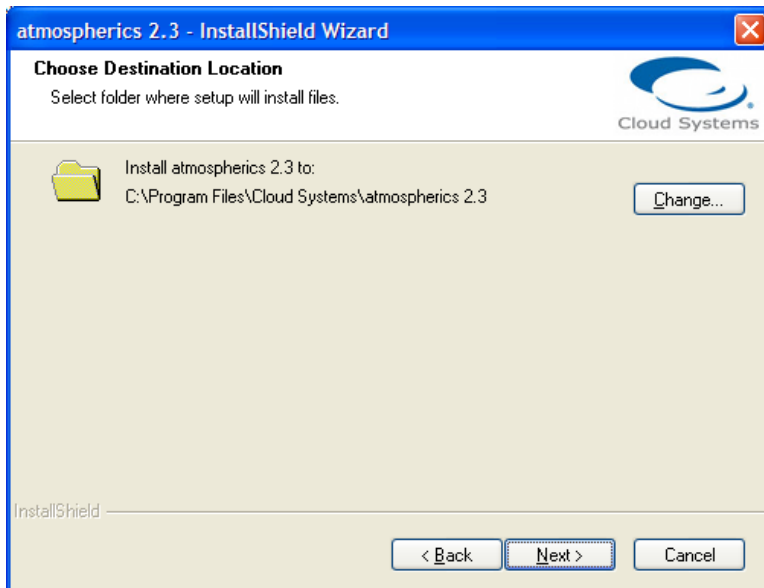
The open source technologies that atmospherics utilizes come bundled with the atmospherics installer. Accept the License Agreements for these technologies and click next.



Select "Next."

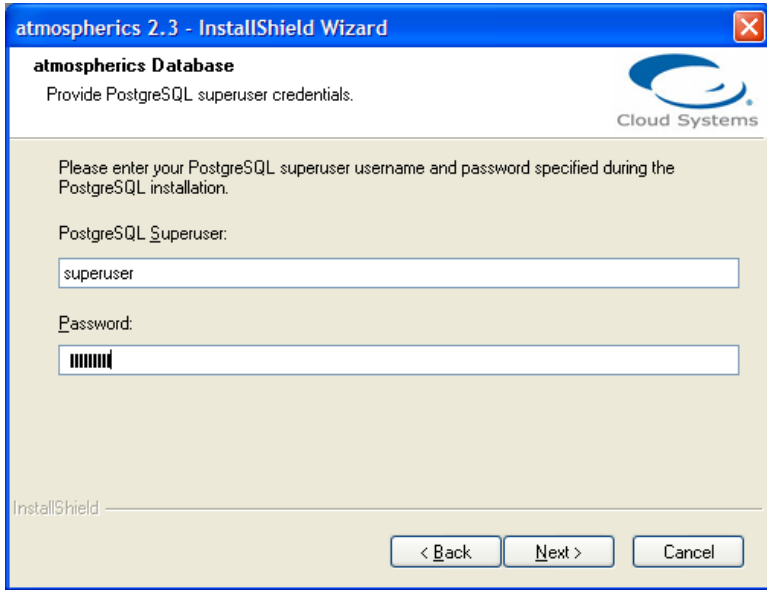


Select "Next."



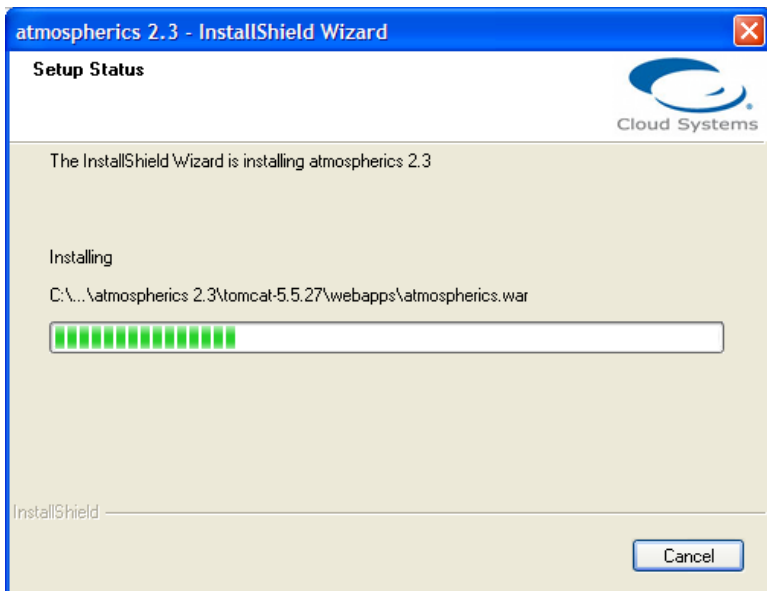
Select "Next."

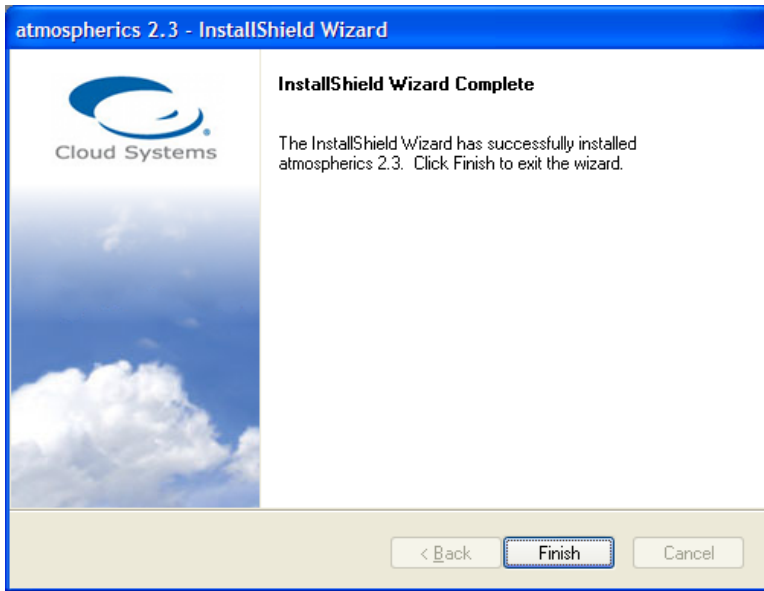
Select the PRODUCTION SETUP TYPE to specify this installation uses Postgres.



Now enter the Postgres SUPERUSER NAME and PASSWORD from the Postgres installation.

Select "Next."

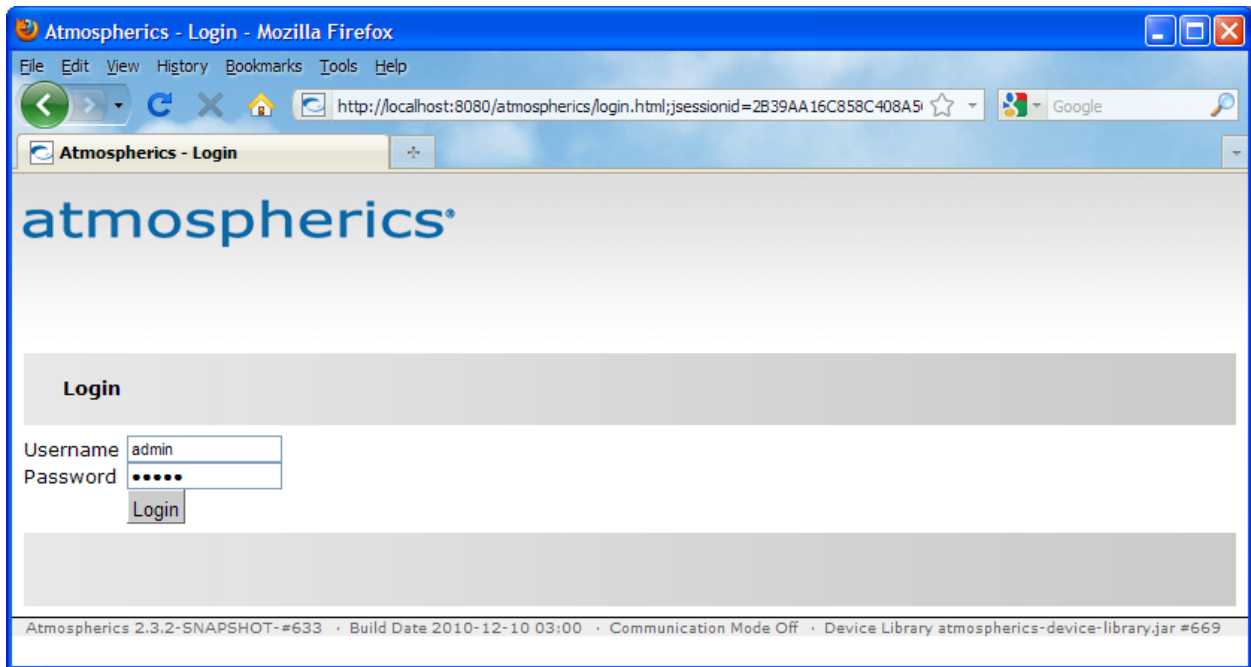




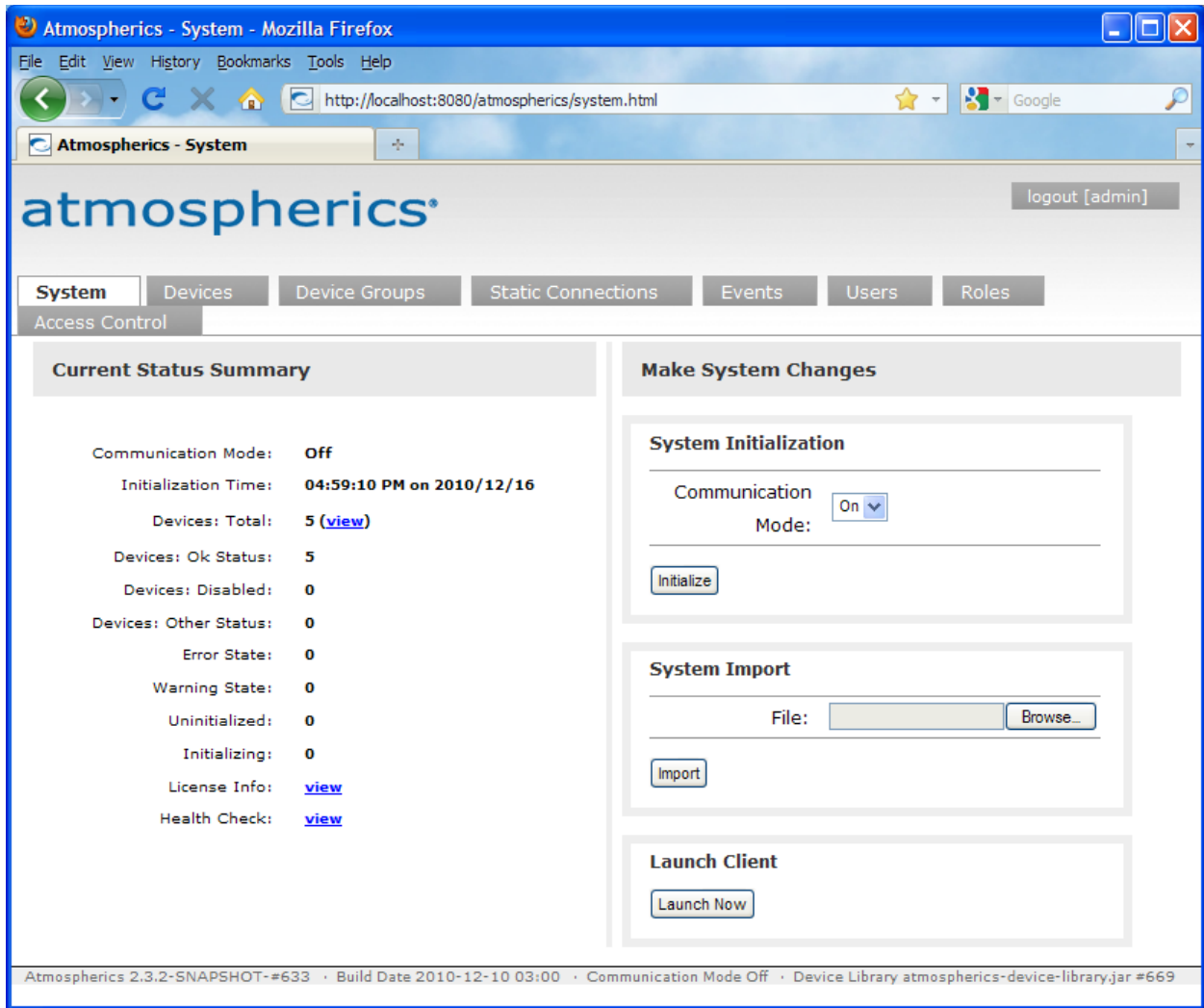
Select "Finish."

atmospherics is now installed and listed under your programs.

You can now log into atmospherics from your web browser.



And you can begin the configuration of your system.



For further information about configuring various aspects of your atmospherics control system, please reference our Administrative Guide, or the training videos on our website (<http://cloudsystems.com/training-videos>).